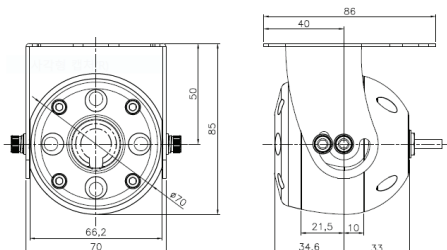


# SVON-MUA51R



## Dimensions



## Product Summary

- 2.0 Mega pixel 1/2.9" SONY progressive scan CMOS image sensor for excellent image quality
- 3.6mm wide view MP lens
- Under water upto 50M use
- Max. Transmission Distance : 100M Over Coaxial Cable on land
- Supports image resolutions up to 1920 x 1080P (30fps)
- Supports D-WDR, Defog, 2D+3DNR, Smart IR, Slow Shutter Control (Sens-Up)
- HD-Analogue Video Output
- Dynamic Motion Detection
- Privacy Masking up to 4 areas
- Tool-Free 3-Axis
- 12VDC

## Major Specifications

\* OSD Menu is subject to change without prior notice

Model Name		SVON-MUA51R
Camera	Image sensor	Sony 1/2.9 inch 2.19MP CMOS Sensor
	H. Resolution	1100TV Lines
	Total Pixels	2001(H) x 1121(V) 2.24 Megapixel
	Effective Pixels	1985(H) x 1105(V) 2.19 Megapixel
	S/N Ratio	More than 52dB (AGC OFF / Weight ON)
	Min. Illumination	0.1 Lux
	WHITE LED	OFF : 88mA±10% / ON : 395mA±10%
	IR LED	OFF : 85mA±10% / ON : 300mA±10%
	Digital Output	AHD/TVI/CVBS
	Lens	3.6mm Megapixel Lens
OSD	PRIVACY MASK	ON/OFF (16 zone)
	MOTION Detection	ON/OFF (4 zone)
	MIRROR	MIRROR/FLIP
	Min. Illumination	0.1Lux
	White Balance	AUTO/AUTOext/PRESET-->SET Manual (2,500°K ~ 9,500°K)
	Shutter Speed	1/30 ~ 1/30,000 NTSC, 1/25 ~ 1/30,000 PAL
	Sens-up	Selectable Limit x2 ~ x32
	Back Light	OFF/HLC/BLC/WDR
	Gain Control	0 ~ 10 Level
	2D/3DNR	LOW/MID/HIGH
	DAY / NIGHT	WHITE LED : COLOR/BLACK & WHITE
	DAY / NIGHT	IR LED : AUTO/AGC/COLOR/ BLACK & WHITE
	SHARPNESS	0 ~ 10 (Level adjustable)
	DEFOG	AUTO
Language	ENG / ARB / HEB / JPN / KOR / TUR / NED / POR / RUS / POL / SPA / ITA / FRA / GER / CHN2 / CHN1	
Physical	Power Source	12VDC
	Operating current	120mA(IR Off) 250mA(IR ON)
	Net Weight	520g
	Dimension	70mm(W) x 85mm(V) x 86mm(L)
General	Operating Temperature	-10 degree ~ +50 degree Celsius