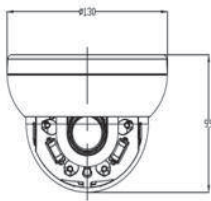


SVNV13194AR



Dimensions



Product Summary

- 6.87 Mega pixel 1/2.9" STAVIS SENSOR
- 2.7~12mm MP VF Lens
- 40M IR Beam Distance (Built-in High Power LED's)
- Perfect tool-free 3-Axis mechanism inside
- Extended IR life span
- Triple Streaming of H.265/HEVC,H.264 and MJPEG
- Supports image resolutions 6MP (3072 x 1728@25fps), 5MP (@30fps), 4MP (30fps)
- Supports CBR (constant bit rate) and VBR (variable bit rate) modes
- Supports Tampering-Alarm in VA(video analytics)function
- Supports IEEE 802.3af Power over Ethernet injectors, mid- and end-spans
- Controllable frame rate
- Supports WDR, 3DNR, IP67
- 12VDC/ IEEE802.3af POE
- Conformant with ONVIF (Profile-S)
- Includes Windows based IP Installer and license-free 16 channel NVR(Network Video Recorder) software

Major Specifications

* OSD Menu is subject to change without prior notice

Model Name		SVNV13194AR
System	CPU	ARM Cortex-A9 (816MHz, Instruction cache: 32kbyte, data cache: 128kbyte-L2, FPU)
	Flash	2Gbit Flash memory
	SDRAM	8Gbit DDR3
Camera	Image sensor	6.87 Mega 1/2.9" SONY STARVIS image sensor
	Total Pixels	3096(H) x 2218(V) 6.87 Megapixel
	Effective Pixels	3096(H) x 2202(V) 6.82 Megapixel
	S/N Ratio	More than 50dB
	Min. Illumination	0 Lux (IR On)
	IR Distance	40M (Built-in Hi Power LED's)
	Day & Night	Auto / Color / B/W - ICR Filter Changer
	Lens	2.7~12mm MP VF Lens
Video	Video compression	H.265/HEVC Main Profile Level 5.1 encoding, H.264 High profile @Level 5.1, MJPEG
	Resolutions	Up to 3072 x 1728@25fps
	Video streaming	Support multi stream with H.265,H.264, MJPEG, Adjustable frame rate, VBR/CVBR (Smart HEVC low bitrate)
	Back light	WDR(Low/Middle/High) / ATR
	Shutter Speed	1/30 ~ 1/10000
	Noise reduction	3DNR
	Image setting	Brightness, contrast, Sharpness, Day & Night, Auto White Balance, Auto Exposure, Privacy Mask, DSS, V-Flip, etc.
Audio / Alarm	Audio Streaming	Two Way, Full-Duplex
	Audio Compression	G.711
	Sample Rate	8 ~ 48KHz
	Audio In/Out	Microphone input / 1x Line-In, Line-Output / 1x Line-Out
System Integration	Security	Password Protection, User access log, HTTPS encryption
	Supported protocol	HTTP, HTTPS, DNS, RTSP, RTP, TCP, UDP, ICMP,DHCP, SNMP, IP-FILTER
	Intelligent video	Motion detection (4 Separate blocks)
	Alarm events	Motion detection, External Input(NO/NC Type)
	Video buffer	5MB pre-alarm and 180 sec (max) post-alarm
	Firmware upgrade	Remote upgrade via network
	API	CGI Interface document
Physical	Power Source	DC12V/1.5A, PoE(Power over Ethernet): 802.3af
	Storage	Micro SD Slot (Built-in)
	Power Consumption	Max. 7.6W with IR ON((External DC 12V used)
	Net Weight	1,000g((Camera Only)
	LED's	Power, Network Connection
General	Dimension	TBD
	Operating Temperature	-10 degree~50 degree Celsius(14F~122F)
	Storage Temperature	-20 degree~60 degree Celsius(-4F~140F)
Software	Included Software	NVR C/S (16 Channel), IP Installer (Windows only)