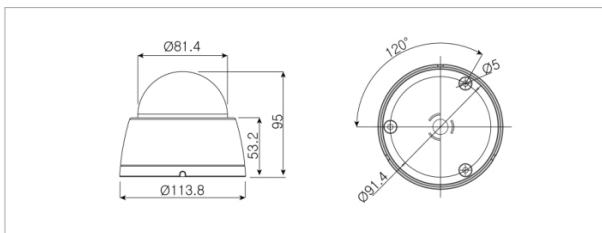


SVNI80E54AR



Dimensions



Product Summary

- 2 Mega pixel 1/2.8" SONY progressive scan CMOS image sensor for excellent image quality
- 2.7~12mm Megapixel Lens
- 40M IR Beam Distance (4 Built-in High Power LED's)
- Triple Stream
- Supports image resolution up to 2MP
- 1920(H)x 1080(V) 2MP Max. 30fps
- Supports VBR/CBR
- Controllable frame rate
- Supports WDR, 3DNR, Smart IR
- Digital PTZ
- Tool-Free 3-Axis
- 12VDC/ IEEE802.3af POE
- Conformant with ONVIF (Profile-S)
- Includes Windows based IP Installer and license-free 16 channel NVR(Network Video Recorder) software

Major Specifications

* OSD Menu is subject to change without prior notice

Model Name		SVNI80E54AR
System	CPU	ARM Cortex-A9 (816 MHz, Instruction cache : 32kbyte, data cache : 128kbyte-L2, FPU)
	Flash	256 Mbyte
	SDRAM	256 Mbyte
Camera	Image sensor	2.07 Megapixel 1/2.8" CMOS image sensor
	Total Pixels	1945(H) x 1109(V) 2.16 Megapixel
	Effective Pixels	1945(H) x 1097(V) 2.13 Megapixel
	S/N Ratio	More than 50dB
	Min. Illumination	0 Lux (IR On)
	IR Distance	40M (4 Built-in Power LED's)
	Day & Night	ICR
Video	Lens	2.7~12mm Vari-focal Motorized Megapixel Lens
	Video compression	H.265 Main profile @Level4.1 H.264 BP/MP/HP profile @Level4.1 Motion JPEG
	Resolution	Up to 1920 x 1080 2MP
	Frame rate	Triple Stream H.265/H.264 Up to 30fps with 1920x1080p H.265/H.264 Up to 30fps with 720p H.264/MJPEG Up to 30fps with 640x480
	Video streaming	Support multi stream with H.265,H.264, MJPEG Adjustable frame rate VBR/CBR
	Pan/Tilt/Zoom	Digital PTZ
Physical	Image setting	Day & Night, Auto White Balance, Auto Exposure, Privacy Mask, WDR/ATR 3DNR, DSS, Effect - Color, Mirror/V-Flip, etc.
	Power Source	DC12V/1.5A, PoE(Power over Ethernet): 802.3af-Optional
	Power Consumption	Max. 6.5W with IR On
	Net Weight	280g (Camera only)
	LED's	Power, Network Connection
General	Dimension	113.8mm x 95mm
	Operating Temperature	-40 degree ~ 60 degree Celsius(-40F~140F)
Software	Included Software	NVR C/S (16 Channel), IP Installer (Windows only)