

SVM-4008



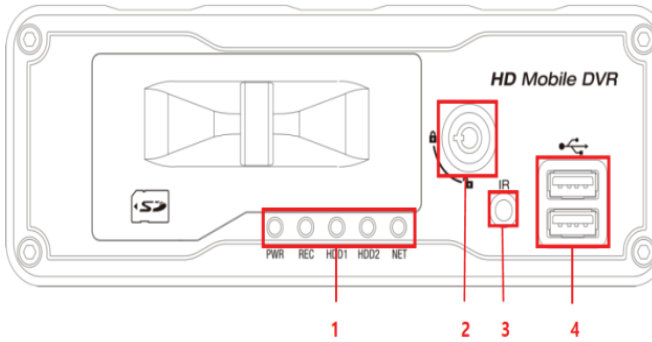
Product Summary

- Video Input : 8Ch - AHD720P, 960H, D1
- 2 x 2.5" HDD or 2 x SSD
- SD Card slot for Event Recording
- 1 CVBS Video Out & 1 HDMI Video Out
- Storage Capacity : Max. 4TB (2TB x 2)
- Alarm In 8TTL / Alarm Out 4 Relay
- Supports WiFi Dongle through USB Port
- 10/100/1000 Ethernet Network
- PC Viewer, Monitoring Software (ACMS)

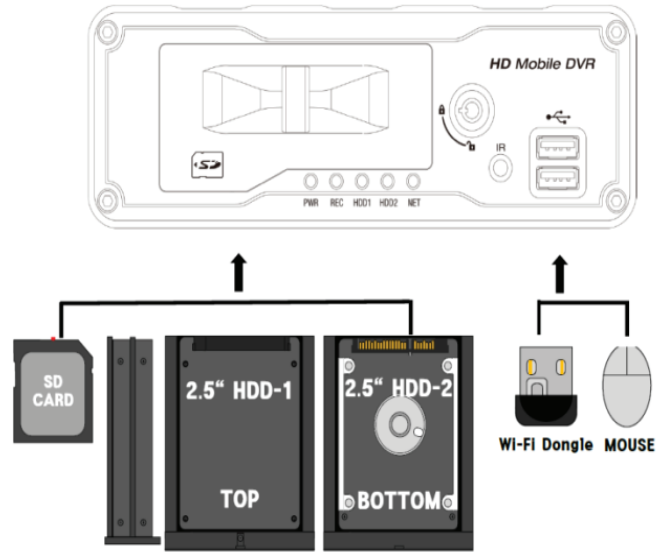
Major Specifications

| Model Name | SVM-4008 |
|-------------------------------------|---|
| Operating system | Embedded Linux |
| Video input | 8CH (AHD 720P or SD) |
| Video output | CVBS 1CH, HDMI 1CH |
| Video compression | H.264 |
| Audio input/output | 8CH + 1CH MIC (EXT.Port) / 1CH + 1CH Speaker (EXT.Port) |
| Audio compression | G.711 |
| Display split | 1, 4, 8 |
| Recording mode | Normal / Event / Motion |
| Recording | AHD 720P - 240 (200)fps in total SD - 240 (201)fps in total |
| Internal Buzzer | Supported |
| G-sensor | Built-in, (Tri-axial acceleration sensor) |
| GPS | Built-in, (G-mouse) |
| Triplex (Live, Playback, Record) | Triplex (Playback, Record, Copy) |
| USB | 2x Front Ports USB 2.0 Front, 1 x Rear port USB 2.0 |
| Storage | 2x 2.5" SATA HDD / SSD RACK, 2TB each (max. size) SD card for event recording) |
| Alarm input | 8 TTL |
| Alarm output | 4 Relay |
| Network | 10/100/1000 Ethernet, Wifi wireless (using wifi dongle) |
| Working temperature | -20°C -70°C, -4°F - 140°F |
| Storage temperature | -40°C -85°C, -40°F - 185°F |
| Working Humidity | 0% - 90% |
| Working Voltage | DC 12V / 24V |
| Product dimension (Without bracket) | 182mm x 175mm x62mm (W x D xH) |
| Product Weight | Approx. 1.1kg |
| Certifications | FCC, E-mark, CLASS-B |
| PC Viewer Software CD | Smart Blur Software Wi-Fi Download Audio /Video Backup Software |
| Monitoring Software | ACMS 1.0 : PC installation MDVR monitoring software ACMS 2.0 : Sever-web based monitoring software |

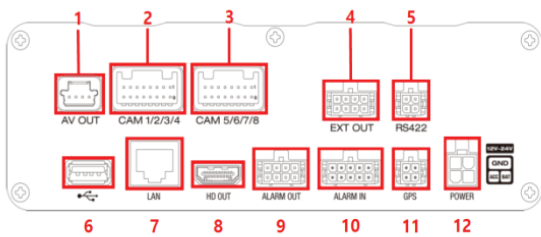
Front Panel Functions



- ① Front LED indicators
 - PWR : POWER ON > Green LED on
 - REC : RECORDING > Red LED on
 - HDD1: HDD-1 mounted > Orange LED flickering
 - HDD2: HDD-2 mounted > Orange LED flickering
 - NET: Network connected > Green LED on
- ② Key lock: HDD and SD card lock
- ③ IR receiver for remote control
 - ※ Make sure IR receiver is cleared and not blocked for remote control usage.
- ④ USB port: USB memory for upgrade and backup, USB mouse or WIFI dongle



Rear Panel Connections



- ① A/V OUT : 4 PIN VIDEO/AUDIO OUTPUT connector
- ② CAM 1/2/3/4 : 16 PIN/Camera 1CH – 4CH VIDEO/AUDIO INPUT connector
- ③ CAM 5/6/7/8 : 16 PIN/Camera 5CH - 8CH VIDEO/AUDIO INPUT connector
- ④ EXT OUT : 4 PIN/Speaker, MIC and other output connectors
- ⑤ RS422 : 4 PIN / Tx (+, -) & Rx (+, -)
- ⑥ USB : USB memory, mouse or WIFI dongle connection
- ⑦ LAN : RJ-45 / Remote connection to PC via Ethernet
- ⑧ HD OUT : 19 PIN / HD video out connector
- ⑨ Alarm Out : 8 PIN / Alarm out relay connector
- ⑩ Alarm In : 10 PIN / Alarm in connector
- ⑪ GPS : 4 PIN / G-MOUSE connector
- ⑫ POWER: 4 PIN power connector

